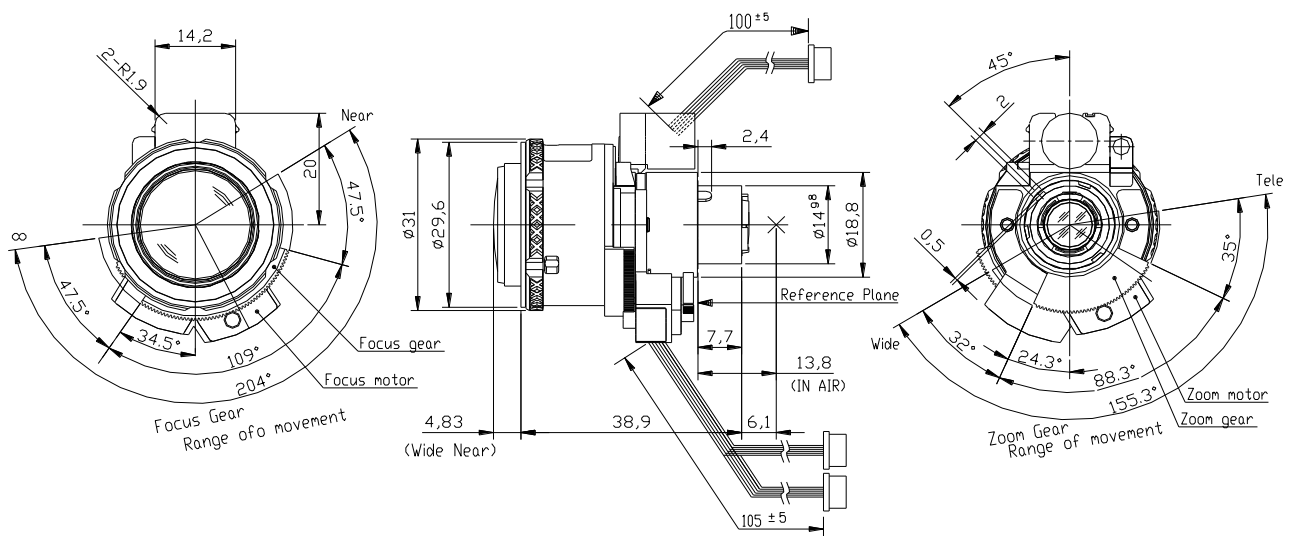


# MFVF3X3414IR-BCD-MD



|                         |       |                  |                                   |                                   |
|-------------------------|-------|------------------|-----------------------------------|-----------------------------------|
| Type                    |       | AI VARI          | Mount                             | φ 14 Straight Mount               |
| Focal Length            |       | 3.4~10.0mm       | Back Focus                        | 5.11~11.88mm                      |
| Fno.                    |       | F1.4             | Flange Back                       | 13.8mm                            |
| Designed Image Format   |       | 1/2.5"(φ 7.2)    | Exit Pupil                        | -70.2 ~ -10.8mm                   |
| Operation Range         | Iris  | F1.4-F360        | Filter Size                       | -                                 |
|                         | Focus | 0.5m~∞           | Aperture                          | Front φ 18.8mm                    |
|                         | Zoom  | 3.4~10.0mm       |                                   | Rear φ 7.8mm                      |
| Control                 | Iris  | DC Galvanometer  | Dimension                         |                                   |
|                         | Focus | Mortorized       | φ 31.6 x 38.9mm                   |                                   |
|                         | Zoom  | Mortorized       | Weight                            |                                   |
|                         | ICR   | -                | 26.5g                             |                                   |
| Object Size at MOD      | Wide  | 785x1298mm       | 606x1675mm                        |                                   |
|                         | Tele  | 240x325mm        | 197x363mm                         |                                   |
| Field of View           | D     | 136° ~ 44°       | 139° ~ 45°                        |                                   |
|                         | H     | 4:3 104° ~ 35°   | 16:9 117° ~ 39°                   |                                   |
|                         | V     | Screen 75° ~ 27° | Screen 61° - 22°                  |                                   |
| Control                 |       | Iris             | Focus                             | Zoom                              |
| Motor type              |       | Galvanometer     | PM type stepping motor            | PM type stepping motor            |
| Operation voltage       |       | 3.0V ~ 5.0V      | 2.8V ~ 3.6V                       | 2.8V ~ 3.6V                       |
| Driving Coil resistance |       | 190Ω /phase ±10% | 28.5Ω /phase ±7%                  |                                   |
| Damping Coil resistance |       | 855Ω /phase ±10% | -                                 | -                                 |
| Excite driving method   |       | -                | 1-2phase Bipolar Constant voltage | 1-2phase Bipolar Constant voltage |
| Reduction ratio         |       | -                | 1/131.574                         | 1/131.574                         |
| Step angle              |       | -                | 0.171°                            | 0.171°                            |
| Insulation resistance   |       | 1MΩ or more      | 1MΩ or more                       | 1MΩ or more                       |
| Light Measuring Method  |       | -                |                                   |                                   |
| Input Signal            |       | -                |                                   |                                   |
| Iris Accuracy           |       | -                |                                   |                                   |
| Sensitivity Adjustment  |       | -                |                                   |                                   |
| Operating Temperature   |       | -10 ~ +50 °C     |                                   |                                   |

## DIMENSIONS



Subject to change without notice

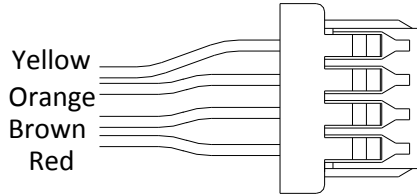
# MFVF3X3414IR-BCD-MD



## CONNECTION & CONTROL

(1) Auto Iris terminal

1 (Marking)

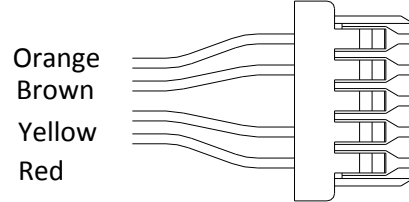


51021-0400

| Pin number | Color  | Assignment  |
|------------|--------|-------------|
| 1          | Yellow | Damping(+)  |
| 2          | Orange | Damping(-)  |
| 3          | Brown  | Driving (+) |
| 4          | Red    | Driving (-) |

(2) Zoom Moter Control terminal

1 (Marking)

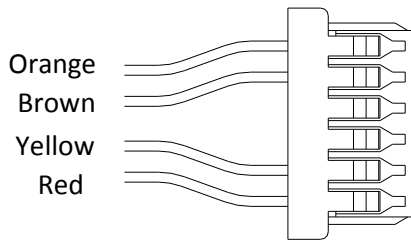


51021-0500

| Pin number | Color  | Assignment |
|------------|--------|------------|
| 1          | Orange | B          |
| 2          | Brown  | A          |
| 3          | N/A    | N/A        |
| 4          | Yellow | $\bar{B}$  |
| 5          | Red    | $\bar{A}$  |

(3) Focus Moter Control terminal

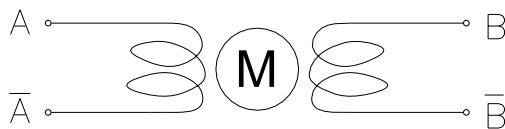
1 (Marking)



51021-0600

| Pin number | Color  | Assignment |
|------------|--------|------------|
| 1          | Orange | B          |
| 2          | Brown  | A          |
| 3          | N/A    | N/A        |
| 4          | N/A    | N/A        |
| 5          | Yellow | $\bar{B}$  |
| 6          | Red    | $\bar{A}$  |

(4) Moter Control Excitation pattern



Motor connection

Focus & Zoom

| Excite Pottem of CW revolution |   |           |   |           |
|--------------------------------|---|-----------|---|-----------|
| Step                           | A | $\bar{A}$ | B | $\bar{B}$ |
| 0                              | H | L         | H | L         |
| 1                              | L | L         | H | L         |
| 2                              | L | H         | H | L         |
| 3                              | L | H         | L | L         |
| 4                              | L | H         | L | H         |
| 5                              | L | L         | L | H         |
| 6                              | H | L         | L | H         |
| 7                              | H | L         | L | L         |