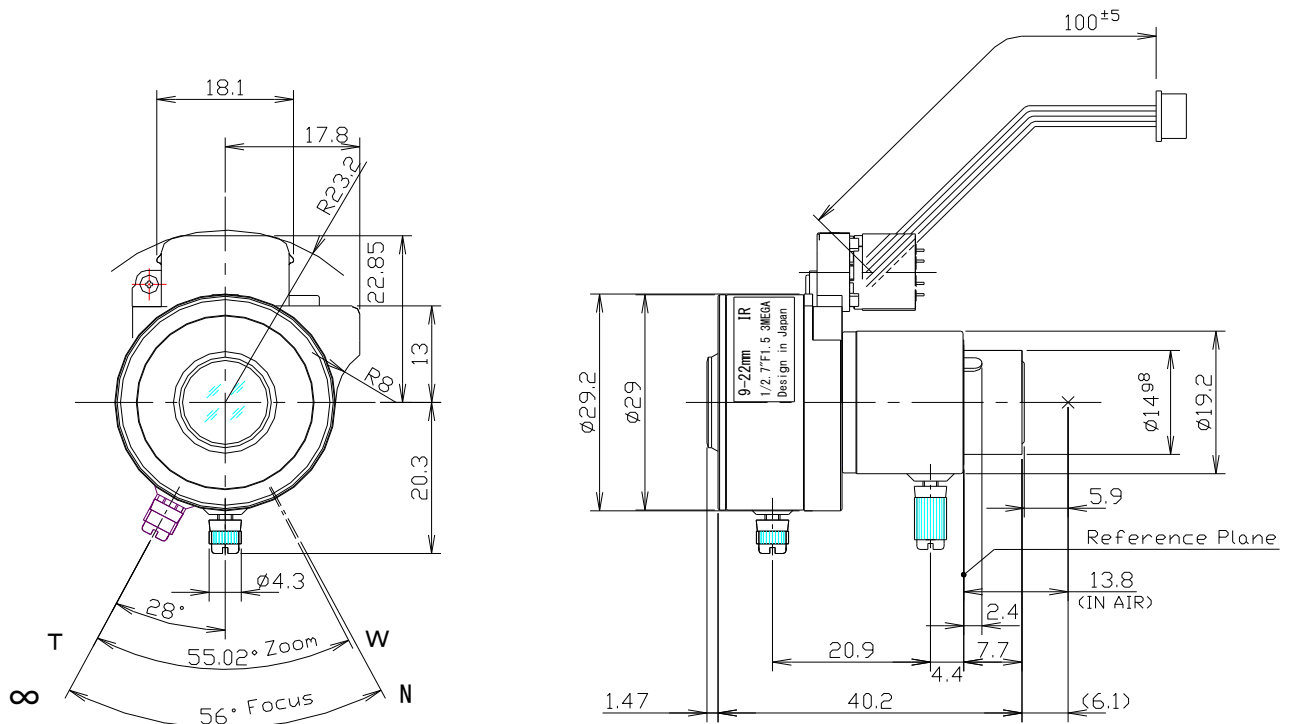


MSVF2.4X0915IR-BCD



Type	AI VARI		Mount	φ 14 Straight Mount
Focal Length	9.0~22.0mm		Back Focus	6.7~14.2mm
Fno.	F1.5		Flange Back	13.8mm
Designed Image Format	1/2.7"(φ 6.71)		Exit Pupil	-43.2 ~ -25.2mm
Operation Range	Iris	F1.5-F360	Filter Size	-
	Focus	0.5m~∞	Aperture	Front φ 10.5mm
	Zoom	9.0~22.0mm		Rear φ 7.3mm
Control	Iris	DC Galvanometer	Dimension	φ 29 x 40.2mm
	Focus	Manual Control		
	Zoom	Manual Control		
	ICR	-		
Object Size at MOD	Wide	4:3 232.5x318.6mm 96.9x129.5mm	16:9 190.3x358.6mm 80.1x143.9mm	
	Tele			
Field of View	D	4:3 42.9° ~ 18.5° 33.8° ~ 14.1° Screen 25.0° ~ 10.6°	16:9 43.7° ~ 18.0° 37.7° ~ 15.7° Screen 20.6° ~ 8.8°	
	H			
	V			
Control	Iris			
Motor type	Galvanometer			
Operation voltage	3V ~ 5.0V			
Driving Coil resistance	190Ω /phase ±10%			
Damping Coil resistance	465Ω /phase ±10%			
Excite driving method	-			
Reduction ratio	-			
Step angle	-			
Insulation resistance	1MΩ or more			
Light Measuring Method	-			
Input Signal	-			
Iris Accuracy	-			
Sensitivity Adjustment	-			
Operating Temperature	-20 ~ +50 °C			

DIMENSIONS



Subject to change without notice

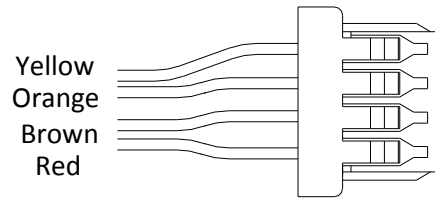
MSVF2.4X0915IR-BCD



CONNECTION & CONTROL

Auto Iris terminal

1 (Marking)



51021-0400

Pin number	Color	Assignment
1	Yellow	Damping(+)
2	Orange	Damping(-)
3	Brown	Driving (+)
4	Red	Driving (-)