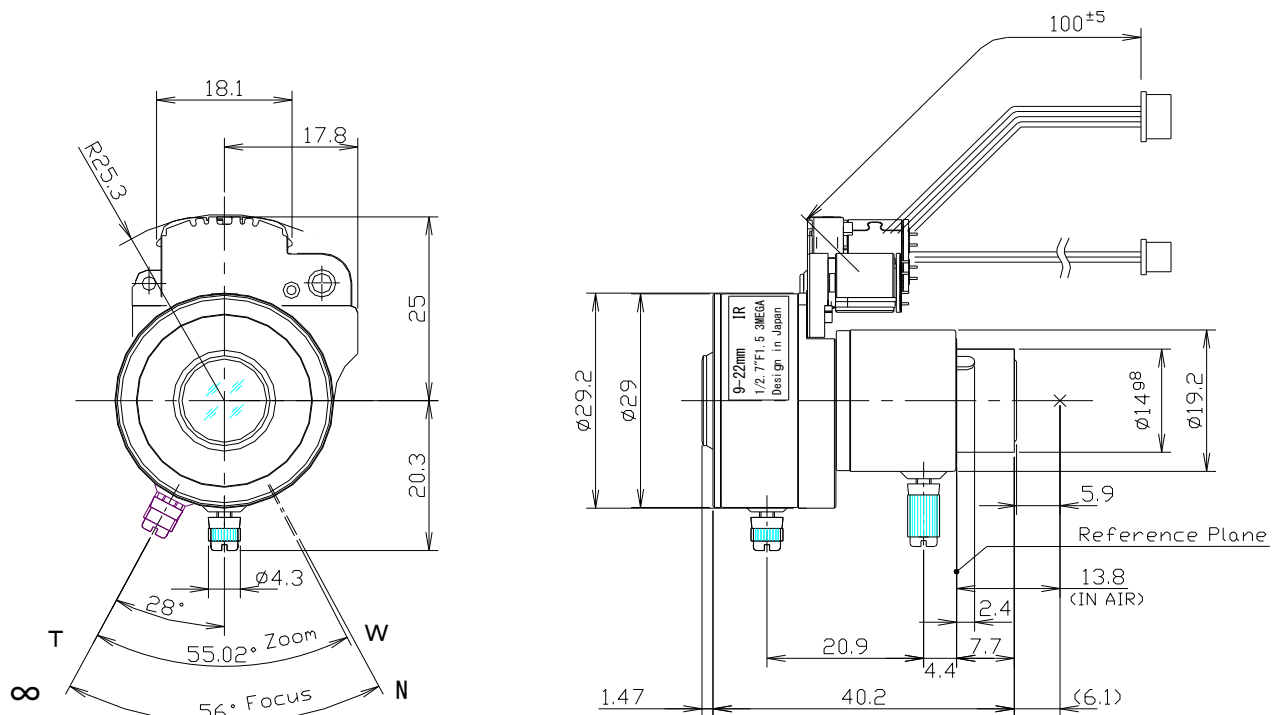


MSVF2.4X0915IR-BCDN



Type	AI VARI		Mount	φ 14 Straight Mount		
Focal Length	9.0~22.0mm		Back Focus	6.7~14.2mm		
Fno.	F1.5		Flange Back	13.8mm		
Designed Image Format	1/2.7" (φ 6.6)		Exit Pupil	-43.2 ~ -25.2mm		
Operation Range	Iris	F1.5-T360	Filter Size	-		
	Focus	0.5m~∞	Aperture	Front	φ 10.5mm	
	Zoom	9.0~22.0mm		Rear	φ 7.3mm	
Control	Iris	DC Galvanometer	Dimension	φ 29 x 40.2mm		
	Focus	Manual Control		Weight	29g	
	Zoom	Manual Control				
	ICR	DC Galvanometer				
Object Size at MOD	Wide	4:3 232.5x318.6mm	16:9	190.3x358.6mm		
	Tele	96.9x129.5mm		80.1x143.9mm		
Field of View	D	42.9° ~ 18.5°	16:9	43.7° ~ 18.0°		
	H	33.8° ~ 14.1°		37.1° ~ 15.4°		
	V	Screen	25.0° ~ 10.6°	Screen	20.6° ~ 8.8°	
Control	Iris	IR cut filter				
Motor type	Galvanometer	Galvanometer				
Operation voltage	3V ~ 5.0V	3V ~ 5.0V				
Driving Coil resistance	190Ω/phase ± 10%	190Ω/phase ± 10%				
Damping Coil resistance	465Ω/phase ± 10%	-				
Excite driving method	-	-				
Reduction ratio	-	-				
Step angle	-	-				
Insulation resistance	1MΩ or more	1MΩ or more				
Light Measuring Method					-	
Input Signal					-	
Iris Accuracy					-	
Sensitivity Adjustment					-	
Operating Temperature					-20 ~ +50 °C	

DIMENSIONS



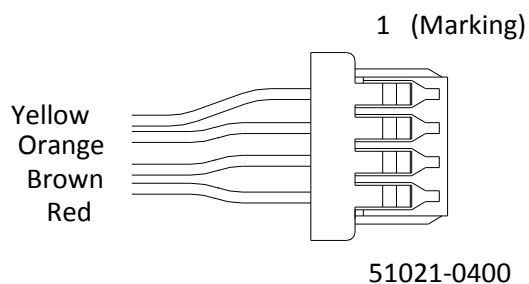
Subject to change without notice

MSVF2.4X0915IR-BCDN



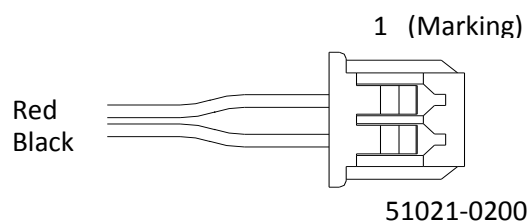
CONNECTION & CONTROL

(1) Auto Iris terminal



Pin number	Color	Assignment
1	Yellow	Damping(+)
2	Orange	Damping(-)
3	Brown	Driving (+)
4	Red	Driving (-)

(2) IR Cut Filter Control terminal



Pin number	Color	Assignment
1	Red	IR IN/OUT(-/+)
2	Black	IR GND